



<b>optibelt TN Anschraubnaben – Bolt on hubs</b>													
Bezeichnung Part No.	Material	Taper- Buchse Taper bush	D <sub>A</sub> (mm)	D <sub>T</sub> (mm)	D + 0/- 0,1 (mm)	D <sub>K</sub> (mm)	B (mm)	b (mm)	Z (mm)	B <sub>M</sub> (mm)	d (mm)	Gewicht o. Buchse Weight without bush (≈ kg)	€ Stück ohne Buchse each without bush
SM 12	GG	1210	180	135	90	75	25	6,5	2,5	11,5	6 x 7,5	1,5	43,20
SM 16	GG	1615	200	150	110	85	38	7,5	2,5	12,5	6 x 7,5	3,0	50,30
SM 20	GG	2012	270	190	140	110	32	8,5	2,5	13,5	6 x 9,5		72,20
SM 25	GG	2517	340	240	170	125	45	9,5	2,5	14,5	8 x 11,5	7,6	113,00
SM 30-1	GG	3020	430	300	220	160	51	13,5	2,5	18,5	8 x 13,5	16,6	162,00
SM 30-2	GG	3020	485	340	250	160	51	13,5	2,5	18,5	8 x 13,5	20,5	255,00

<b>optibelt TN Einschweißnaben Type WM – Weld on hubs type WM</b>											
Bezeichnung Part No.	Material	Taper- Buchse Taper bush	D <sub>A</sub> (mm)	D + 0/- 0,05 (mm)	D <sub>K</sub> (mm)	B + 0,5/- 0,05 (mm)	b <sub>1</sub> (mm)	b <sub>2</sub> (mm)	Gewicht ohne Buchse Weight without bush (≈ kg)	€ Stück ohne Buchse each without bush	
WM 1210	St	1210	70	60	58	25	9	10	0,3	32,30	
WM 1615	St	1615	83	70	68	38	16	11	0,6	39,80	
WM 2012	St	2012	95	90	88	32	12	12	0,7	41,90	
WM 2517	St	2517	127	110	108	44	19	13	1,8	52,20	
WM 3030	St	3030	152	130	125	76	25	19	3,5	93,20	
WM 3535	St	3535	184	155	151	89	32	25	10,0	166,00	
WM 4040	St	4040	225	195	187	102	32	32	13,2	238,00	
WM 4545	St	4545	254	220	213	115	38	38	20,1	370,00	
WM 5050	St	5050	276	242	228	127	38	38	25,4	574,00	

<b>optibelt TN Einschweißnaben Type WH – Weld on hubs type WH</b>											
Bezeichnung Part No.	Material	Taper- Buchse Taper bush	D <sub>A</sub> (mm)	D + 0/- 0,05 (mm)	D <sub>K</sub> (mm)	B + 0,5/- 0,05 (mm)	b <sub>1</sub> (mm)	b <sub>2</sub> (mm)	Gewicht ohne Buchse Weight without bush (≈ kg)	€ Stück ohne Buchse each without bush	
WH 1210	St	1210	70	65	64,5	25	9	10	0,3	32,30	
WH 1610	St	1610	80	75	74,5	25	9	10		39,80	
WH 2012	St	2012	95	90	89,5	32	12	12		41,90	
WH 2517	St	2517	115	110	109,5	44	19	15		52,20	
WH 3020	St	3020	145	140	139,5	50	19	15	2,7	93,20	
WH 3525	St	3525	190	180	179,5	65	25	25		129,00	
WH 3535	St	3535	190	180	179,5	89	32	25	10,0	166,00	
WH 4040	St	4040	200	190	189,5	101	32	30		238,00	
WH 4545	St	4545	210	200	199,5	115	40	30		370,00	
WH 5050	St	5050	230	220	219,5	127	40	35		574,00	

Taper-Buchse Taper bush	1210	1610	1615	2012	2517	3020	3030	3525	3535	4040	4545	5050
Bohrung d <sub>2</sub> (mm) von ... bis ... Bore d <sub>2</sub> (mm) from ... to ...	11-32	14-42	14-42	14-50	16-60	25-75	35-75	35-90	35-90	40-100	44-110	70-125
€/Stück each	10,90	13,00	13,60	15,90	20,00	25,90	34,00	69,00	65,40	92,00	117,00	187,00

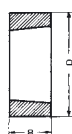
Bohrungsdurchmesser d<sub>2</sub> siehe Seite 3.  
Bore diameters d<sub>2</sub> see page 3.

Weitere Abmessungen auf Anfrage.  
Further sizes on request.

GG = Grauguss  
GG = Cast iron

St = Stahl  
St = Steel

Fertigungstechnische Änderungen vorbehalten.  
We reserve the right to make technical changes.

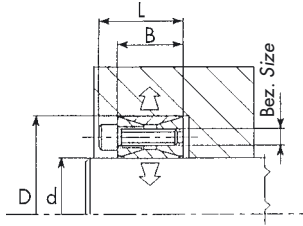


Bezeichnung Part No.	Material	Taper- Buchse Taper bush	D (mm)	B (mm)	Nut- querschnitt Keyway dimensions b x h (mm)	Minimaler Nabendurchmesser der Scheibe Minimum hub diameter			Gewicht ohne Buchse Weight without bush (≈ kg)	€ Stück ohne Buchse each without bush
						Material				
						GG	GGG	St		
1008 AM 1008 BM	St St	1008 1008	45 45	22 22	5 x 2,5	71 75	62 67	56 60	0,1 0,1	<b>26,40</b> <b>26,40</b>
1210 AM 1210 BM	St St	1210 1210	60 60	25 25	6 x 3	86 92	79 86	73 83	0,2 0,2	<b>39,60</b> <b>41,40</b>
1610 AM 1610 BM	St St	1610 1610	70 70	25 25	10 x 4	95 102	89 95	83 89	0,3 0,3	<b>47,60</b> <b>49,30</b>
1615 AM 1615 BM	St St	1615 1615	70 70	38 38	10 x 4	95 102	89 95	83 89	0,4 0,4	<b>52,00</b> <b>53,80</b>
2517 AM 2517 BM	St St	2517 2517	105 105	45 45	16 x 4	143 149	133 140	121 127	1,0 1,0	<b>69,60</b> <b>70,40</b>
3030 AM 3030 BM	St St	3030 3030	130 130	76 76	20 x 5	178 187	165 175	156 159	2,5 2,5	<b>120,00</b> <b>122,00</b>
3535 AM 3535 BM	St St	3535 3535	160 160	89 89	22 x 5	222 232	203 213	191 200	5,2 5,2	<b>195,00</b> <b>200,00</b>
4040 AM 4040 BM	St St	4040 4040	185 185	102 102	24 x 5	273 283	248 257	229 238	8,0 8,0	<b>239,00</b> <b>245,00</b>

St = Stahl *Steel* GG = Grauguss *Cast iron* GGG = Globularer Grauguss *Spheroidal graphite cast iron* AM = Ohne Keilnut *Without keyway* BM = Mit Keilnut *With keyway*

Taper-Buchse Taper bush	1008	1210	1610	1615	2517	3030	3535	4040
Bohrung d <sub>2</sub> (mm) von ... bis ... Bore d <sub>2</sub> (mm) from ... to ...	10-25	11-32	14-42	14-42	16-60	35-75	35-90	40-100
€/Stück <i>each</i>	<b>7,20</b>	<b>10,90</b>	<b>13,00</b>	<b>13,60</b>	<b>20,00</b>	<b>34,00</b>	<b>65,40</b>	<b>92,00</b>

Bohrungsdurchmesser d<sub>2</sub> siehe Seite 3. *Bore diameters d<sub>2</sub> see page 3.* Weitere Abmessungen auf Anfrage. *Further sizes on request.*  
Fertigungstechnische Änderungen vorbehalten. *We reserve the right to make technical changes.*

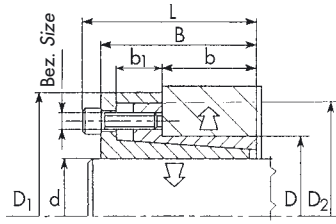


**Type CE01**

Bezeichnung Part No.	Abmessung Dimension				Schrauben Screws			Bei Anzugsmoment M <sub>s</sub> übertragbar With tightening torque M <sub>s</sub> applied		Flächen- pressung Pressure		Gewicht Weight	€/Stück each
	d	D	B	L	Bezeichnung Part No.	Anzahl No.	Anzugs- moment Tightening torque M <sub>s</sub>	Drehmoment Torque	Axialkraft Axial force	Welle Shaft	Nabe Hub		
								M	F	P <sub>W</sub>	P <sub>N</sub>		
								(Nm)	(K <sub>N</sub> )	(N/ mm <sup>2</sup> )	(N/ mm <sup>2</sup> )		
(mm)	(mm)	(mm)	(mm)	Stück each	(Nm)	(Nm)	(K <sub>N</sub> )	(N/ mm <sup>2</sup> )	(N/ mm <sup>2</sup> )	(kg)			
CE01- 18	18	47	20	26	M 6 x 18	8	16	250	28	240	92	0,210	<b>32,10</b>
CE01- 19	19	47	20	26	M 6 x 18	8	16	260	28	225	92	0,210	<b>32,10</b>
CE01- 20	20	47	20	26	M 6 x 18	8	16	280	28	215	92	0,210	<b>32,10</b>
CE01- 22	22	47	20	26	M 6 x 18	8	16	310	28	195	92	0,200	<b>32,10</b>
CE01- 24	24	50	20	26	M 6 x 18	8	16	330	28	180	87	0,222	<b>33,50</b>
CE01- 25	25	50	20	26	M 6 x 18	8	16	350	28	175	87	0,220	<b>33,50</b>
CE01- 28	28	55	20	26	M 6 x 18	12	16	580	42	230	118	0,266	<b>34,90</b>
CE01- 30	30	55	20	26	M 6 x 18	12	16	630	42	215	118	0,254	<b>34,90</b>
CE01- 32	32	60	20	26	M 6 x 18	12	16	670	42	200	110	0,302	<b>38,50</b>
CE01- 35	35	60	20	26	M 6 x 18	12	16	730	42	185	110	0,282	<b>38,50</b>
CE01- 38	38	65	20	26	M 6 x 18	15	16	990	52	215	125	0,328	<b>41,50</b>
CE01- 40	40	65	20	26	M 6 x 18	15	16	1040	52	200	125	0,318	<b>41,50</b>
CE01- 42	42	75	24	32	M 8 x 22	12	38	1600	76	240	140	0,560	<b>47,40</b>
CE01- 45	45	75	24	32	M 8 x 22	12	38	1700	76	225	140	0,528	<b>47,40</b>
CE01- 48	48	80	24	32	M 8 x 22	12	38	1800	76	210	120	0,590	<b>50,70</b>
CE01- 50	50	80	24	32	M 8 x 22	12	38	1900	76	200	130	0,560	<b>50,70</b>
CE01- 55	55	85	24	32	M 8 x 22	15	38	2600	95	230	150	0,622	<b>50,70</b>
CE01- 60	60	90	24	32	M 8 x 22	15	38	2850	95	210	140	0,660	<b>57,40</b>
CE01- 65	65	95	24	32	M 8 x 22	15	38	3100	95	195	130	0,798	<b>59,70</b>
CE01- 70	70	110	28	38	M10 x 25	15	75	5350	150	240	160	1,238	<b>84,20</b>
CE01- 75	75	115	28	38	M10 x 25	15	75	5730	150	225	150	1,294	<b>87,30</b>
CE01- 80	80	120	28	38	M10 x 25	15	75	6100	150	210	140	1,364	<b>89,00</b>
CE01- 85	85	125	28	38	M10 x 25	15	75	6500	150	200	140	1,428	<b>106,00</b>
CE01- 90	90	130	28	38	M10 x 25	15	75	6900	150	185	130	1,482	<b>108,00</b>
CE01- 95	95	135	28	38	M10 x 25	18	75	8700	180	210	150	1,568	<b>113,00</b>
CE01-100	100	145	30	42	M12 x 30	15	130	11200	220	230	160	2,154	<b>134,00</b>
CE01-110	110	155	30	42	M12 x 30	15	130	12300	220	205	150	2,306	<b>139,00</b>
CE01-120	120	165	30	42	M12 x 30	16	130	14300	240	200	150	2,486	<b>144,00</b>
CE01-130	130	180	38	50	M12 x 35	20	130	19400	300	180	130	3,586	<b>207,00</b>
CE01-140	140	190	38	50	M12 x 35	22	130	23000	330	180	140	3,810	<b>222,00</b>
CE01-150	150	200	38	50	M12 x 35	24	130	26900	360	185	140	4,084	<b>246,00</b>
CE01-160	160	210	38	50	M12 x 35	26	130	31000	390	190	150	4,360	<b>273,00</b>
CE01-170	170	225	44	58	M14 x 40	22	200	36300	430	175	140	5,700	<b>311,00</b>
CE01-180	180	235	44	58	M14 x 40	24	200	42000	470	180	140	6,000	<b>349,00</b>
CE01-190	190	250	52	66	M14 x 45	28	200	51800	550	165	130	8,000	<b>471,00</b>
CE01-200	200	260	52	66	M14 x 45	30	200	58300	590	165	130	8,200	<b>511,00</b>
CE01-220*	220	285	56	72	M16 x 50	26	300	74100	680	160	130	11,000	<b>642,00</b>
CE01-240*	240	305	56	72	M16 x 50	30	300	93200	780	170	140	12,300	<b>712,00</b>
CE01-260*	260	325	56	72	M16 x 50	34	300	114500	890	180	150	13,000	<b>999,00</b>
CE01-280*	280	355	66	84	M18 x 60	32	410	141000	1000	160	130	19,000	<b>1.263,00</b>
CE01-300*	300	375	66	84	M18 x 60	36	410	170000	1140	165	140	20,200	<b>1.453,00</b>
CE01-320*	320	405	78	98	M20 x 70	36	590	235500	1500	170	140	30,600	} auf Anfrage on request
CE01-340*	340	425	78	98	M20 x 70	36	590	250000	1500	160	130	30,800	
CE01-360*	360	455	90	112	M22 x 80	36	790	329000	1800	160	130	43,200	
CE01-380*	380	475	90	112	M22 x 80	36	790	346400	1800	150	120	45,000	
CE01-400	400	495	90	112	M22 x 80	36	790	365000	1800	145	120	46,800	

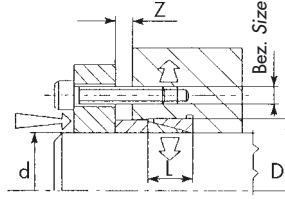
\* Keine Lagerware Non stock items

Fertigungstechnische Änderungen vorbehalten. We reserve the right to make technical changes.



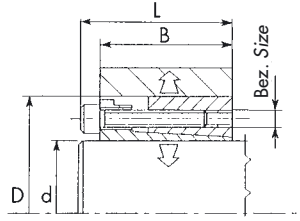
**Type CE02**

Bezeichnung Part No.	Abmessung Dimension								Schrauben Screws			Bei Anzugsmoment M <sub>s</sub> übertragbar With tightening torque M <sub>s</sub> applied		Flächen- pressung Pressure		Gewicht Weight  (kg)	€/Stück each
	d	D	D <sub>1</sub>	D <sub>2</sub>	b	b <sub>1</sub>	B	L	Bezeichnung Part No.	Anzahl No.  Stück each	Anzugs- moment Tighten- ing torque M <sub>s</sub>  (Nm)	Drehmoment Torque	Axialkraft Axial force	Welle Shaft	Nabe Hub		
												M	F	P <sub>w</sub>	P <sub>N</sub>		
												(Nm)	(K <sub>N</sub> )	(N/ mm <sup>2</sup> )	(N/ mm <sup>2</sup> )		
CE02- 6*	6	14	25	23	9	9,5	21,5	24,5	M 3 x 10	4	2	14	4,8	103	95	0,080	43,80
CE02- 8*	8	15	27	24	12	10,0	25,0	29,0	M 4 x 10	3	5	28	7,0	104	101	0,100	43,80
CE02- 10*	10	16	29	26	14	8,5	26,0	30,0	M 4 x 10	4	5	46	9,0	110	108	0,120	43,80
CE02- 12	12	18	32	28	14	8,5	26,0	30,0	M 4 x 10	4	5	55	9,0	88	96	0,140	43,80
CE02- 14	14	23	38	33	14	8,5	26,0	30,0	M 4 x 10	4	5	64	9,0	75	75	0,150	43,80
CE02- 15	15	24	45	40	16	12,5	36,0	42,0	M 6 x 16	4	15	150	19,0	102	132	0,209	43,80
CE02- 16	16	24	45	40	16	12,5	36,0	42,0	M 6 x 16	4	15	150	19,0	96	132	0,218	43,80
CE02- 18	18	26	47	43	18	13,0	38,0	44,0	M 6 x 18	4	17	200	23,0	102	129	0,226	43,80
CE02- 19	19	27	49	44	18	13,0	38,0	44,0	M 6 x 18	4	17	210	23,0	97	125	0,248	43,80
CE02- 20	20	28	49	44	18	13,0	38,0	44,0	M 6 x 18	4	17	220	23,0	92	120	0,248	45,10
CE02- 22	22	32	54	49	25	13,0	45,0	51,0	M 6 x 18	4	17	250	23,0	69	76	0,325	46,50
CE02- 24	24	34	56	51	25	13,0	45,0	51,0	M 6 x 18	4	17	270	23,0	63	71	0,344	46,50
CE02- 25	25	34	56	51	25	13,0	45,0	51,0	M 6 x 18	4	17	280	23,0	61	71	0,332	49,70
CE02- 28	28	39	61	56	25	13,0	45,0	51,0	M 6 x 18	6	17	500	34,0	81	93	0,410	49,70
CE02- 30	30	41	62	57	25	13,0	45,0	51,0	M 6 x 18	6	17	520	34,0	76	89	0,414	49,70
CE02- 32	32	43	65	59	30	13,0	50,0	56,0	M 6 x 18	8	17	730	46,0	84	94	0,478	59,50
CE02- 35	35	47	69	64	30	13,0	50,0	56,0	M 6 x 18	8	17	800	46,0	77	86	0,546	59,50
CE02- 38	38	50	72	67	30	13,0	50,0	56,0	M 6 x 18	8	17	900	46,0	71	81	0,580	64,40
CE02- 40	40	53	75	70	30	13,0	50,0	56,0	M 6 x 18	8	17	900	46,0	67	76	0,626	64,40
CE02- 42	42	55	78	73	40	17,0	65,0	73,0	M 8 x 22	8	41	1800	84,0	89	101	0,880	74,90
CE02- 45	45	59	85	79	40	17,0	65,0	73,0	M 8 x 22	8	41	1900	84,0	84	94	1,028	79,90
CE02- 48	48	62	87	82	45	17,0	70,0	78,0	M 8 x 22	8	41	2000	84,0	72	79	0,980	87,20
CE02- 50	50	65	92	85	45	17,0	70,0	78,0	M 8 x 22	10	41	2600	105,0	87	95	1,270	92,30
CE02- 55	55	71	98	92	50	17,0	75,0	83,0	M 8 x 22	10	41	2900	105,0	73	78	1,480	112,00
CE02- 60	60	77	104	98	50	17,0	75,0	83,0	M 8 x 22	10	41	3100	105,0	67	72	1,658	125,00
CE02- 65	65	84	111	105	50	17,0	75,0	83,0	M 8 x 22	10	41	3400	105,0	62	66	1,922	143,00
CE02- 70	70	90	119	114	60	20,0	91,0	101,0	M10 x 25	10	83	5800	170,0	91	82	2,936	182,00
CE02- 75	75	95	126	120	60	20,0	91,0	101,0	M10 x 25	10	83	6200	170,0	70	77	2,290	217,00
CE02- 80	80	100	131	125	65	20,0	96,0	106,0	M10 x 25	12	83	7800	200,0	74	81	3,342	235,00
CE02- 85	85	106	137	131	65	20,0	96,0	106,0	M10 x 25	12	83	8500	200,0	70	77	3,622	237,00
CE02- 90	90	112	143	137	65	20,0	96,0	106,0	M10 x 25	15	83	11200	250,0	83	91	3,956	255,00
CE02- 95*	95	120	153	146	65	20,0	96,0	106,0	M10 x 25	15	83	11800	250,0	78	85	4,460	282,00
CE02-100*	100	125	162	155	65	24,0	102,0	114,0	M12 x 30	12	145	14600	300,0	82	95	6,000	282,00



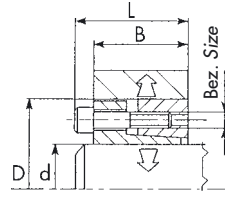
**Type CE03**

Bezeichnung Part No.	Abmessung Dimension							Bei Anzugsmoment $M_s$ übertragbar With tightening torque $M_s$ applied		Flächen- pression Pressure		Ges. Axialkraft der Spann- schrauben Total axial force on the tension screws	Gewicht Weight	€/Stück each
	d	D	L	Z				Drehmoment Torque	Axialkraft Axial force	Welle Shaft	Nabe Hub			
				1	2	3	4							
				(mm)	(mm)	(mm)	(mm)							
CE03- 6*	6	9	4,5	3	3	3	4	2	0,8	96	65	4	0,001	7,30
CE03- 8*	8	11	4,5	3	3	3	4	5	1,0	108	80	6	0,001	7,30
CE03- 10*	10	13	4,5	3	3	3	4	10	2,0	112	100	16	0,002	7,30
CE03- 12*	12	15	4,5	3	3	3	4	11	2,0	111	90	16	0,002	7,30
CE03- 14	14	18	6,3	3	4	4	5	22	3,0	112	90	26	0,004	7,30
CE03- 15	15	19	6,3	3	4	4	5	25	3,0	112	90	27	0,004	7,30
CE03- 16	16	20	6,3	3	4	4	5	26	3,0	112	90	27	0,005	7,30
CE03- 17	17	21	6,3	3	4	4	5	30	3,0	112	90	27	0,006	7,30
CE03- 18	18	22	6,3	3	4	4	5	33	3,0	112	90	33	0,006	7,30
CE03- 19	19	24	6,3	3	4	4	5	40	4,0	112	90	33	0,006	7,30
CE03- 20	20	25	6,3	3	4	4	5	44	4,0	112	90	33	0,008	7,30
CE03- 22	22	26	6,3	3	4	4	5	50	4,0	100	90	34	0,010	7,30
CE03- 24	24	28	6,3	3	4	4	5	68	6,0	114	100	34	0,006	7,30
CE03- 25	25	30	6,3	3	4	4	5	75	6,0	120	100	37	0,010	7,30
CE03- 28	28	32	6,3	3	4	4	5	90	6,0	111	100	40	0,008	7,60
CE03- 30	30	35	6,3	3	4	4	5	100	7,0	111	100	40	0,012	7,60
CE03- 32	32	36	6,3	3	4	4	5	120	7,0	111	100	40	0,010	7,60
CE03- 35	35	40	7,0	3	4	4	5	160	9,0	111	100	50	0,015	7,60
CE03- 38	38	44	7,0	4	5	5	6	190	10,0	111	100	60	0,020	7,60
CE03- 40	40	45	8,0	4	5	5	6	230	11,0	111	100	70	0,020	7,60
CE03- 42	42	48	8,0	4	5	5	6	260	12,0	111	100	70	0,025	11,50
CE03- 45	45	52	10,0	4	5	5	6	390	17,0	111	100	110	0,039	11,50
CE03- 48	48	55	10,0	4	5	5	6	430	18,0	111	100	110	0,042	11,50
CE03- 50	50	57	10,0	4	5	5	6	470	19,0	111	100	110	0,044	11,50
CE03- 55	55	62	10,0	4	5	5	6	580	21,0	111	100	120	0,048	13,70
CE03- 60	60	68	12,0	4	5	6	7	840	28,0	111	100	160	0,072	13,70
CE03- 65	65	73	12,0	4	5	6	7	1000	30,0	111	100	160	0,078	15,70
CE03- 70	70	79	14,0	4	5	6	7	1300	38,0	111	100	200	0,112	19,20
CE03- 75	75	84	14,0	4	5	6	7	1500	41,0	111	100	220	0,120	22,60
CE03- 80	80	91	17,0	5	6	7	8	2100	54,0	111	100	300	0,190	25,90
CE03- 85*	85	96	17,0	5	6	7	8	2300	56,0	111	100	310	0,200	34,70
CE03- 90	90	101	17,0	5	6	7	8	2700	61,0	111	100	320	0,212	34,70
CE03- 95*	95	106	17,0	5	6	7	8	3500	73,0	111	100	380	0,230	41,50
CE03-100	100	114	21,0	5	6	8	9	4200	84,0	111	100	440	0,376	41,50
CE03-110*	110	124	21,0	5	6	8	9	4300	86,0	111	90	450	0,410	44,60
CE03-120*	120	134	21,0	5	6	8	9	5100	88,0	111	90	460	0,450	49,10
CE03-130*	130	148	28,0	6	7	9	11	8100	125,0	111	90	650	0,828	66,20
CE03-140*	140	158	28,0	6	7	9	11	9400	135,0	111	90	690	0,898	76,80
CE03-150*	150	168	28,0	6	7	9	11	11000	145,0	111	90	720	0,973	81,40



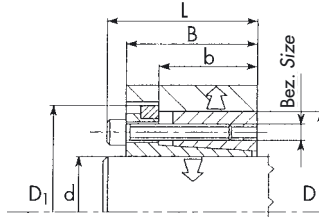
### Type CE04

Bezeichnung Part No.	Abmessung Dimension				Schrauben Screws			Bei Anzugsmoment $M_s$ übertragbar With tightening torque $M_s$ applied		Flächen- pressung Pressure		Gewicht Weight	
								Drehmoment Torque	Axialkraft Axial force	Welle Shaft	Nabe Hub		
	d	D	B	L	Bezeichnung Part No.	Anzahl No.	Anzugs- moment Tightening torque $M_s$	M	F	$P_w$	$P_N$		
	(mm)	(mm)	(mm)	(mm)		Stück each	(Nm)	(Nm)	(kN)	(N/ mm <sup>2</sup> )	(N/ mm <sup>2</sup> )		
CE04- 20	20	47	42	48	M 6 x 25	6	17	530	52	190	110	0,384	34,80
CE04- 22	22	47	42	48	M 6 x 25	6	17	580	52	170	110	0,366	34,80
CE04- 24	24	50	42	48	M 6 x 25	6	17	630	52	160	100	0,410	38,40
CE04- 25	25	50	42	48	M 6 x 25	6	17	660	52	150	100	0,402	38,40
CE04- 28	28	55	42	48	M 6 x 25	6	17	740	52	130	100	0,482	38,40
CE04- 30	30	55	42	48	M 6 x 25	6	17	790	52	130	100	0,458	38,40
CE04- 32	32	60	42	48	M 6 x 25	8	17	1180	70	160	120	0,520	40,70
CE04- 35	35	60	42	48	M 6 x 25	8	17	1230	70	140	120	0,510	40,70
CE04- 38	38	65	42	48	M 6 x 25	8	17	1300	70	130	110	0,600	41,90
CE04- 40	40	65	42	48	M 6 x 25	8	17	1400	70	125	110	0,568	41,90
CE04- 42	42	75	50	58	M 8 x 30	6	41	2000	100	130	120	1,020	51,70
CE04- 45	45	75	50	58	M 8 x 30	6	41	2200	100	125	120	0,934	51,70
CE04- 48	48	80	50	58	M 8 x 30	8	41	3200	130	155	150	1,050	53,80
CE04- 50	50	80	50	58	M 8 x 30	8	41	3300	130	150	150	1,008	53,80
CE04- 55	55	85	50	58	M 8 x 30	8	41	3600	130	135	140	1,124	59,90
CE04- 60	60	90	50	58	M 8 x 30	8	41	3900	130	125	130	1,210	63,60
CE04- 65	65	95	50	58	M 8 x 30	8	41	4200	130	115	120	1,234	111,00
CE04- 70	70	110	60	70	M10 x 30	8	83	7500	210	150	130	2,306	120,00
CE04- 75*	75	115	60	70	M10 x 30	8	83	8000	210	140	130	2,466	124,00
CE04- 80	80	120	60	70	M10 x 30	8	83	8500	210	130	120	2,588	125,00
CE04- 85*	85	125	60	70	M10 x 30	10	83	11400	270	155	150	2,700	140,00
CE04- 90	90	130	60	70	M10 x 30	10	83	12000	270	145	140	2,832	144,00
CE04-100	100	145	68	80	M12 x 35	8	145	15000	300	130	120	3,936	185,00
CE04-110*	110	155	68	80	M12 x 35	8	145	16500	300	120	110	4,300	275,00
CE04-120*	120	165	68	80	M12 x 35	10	145	22500	370	135	130	4,600	304,00
CE04-130*	130	180	68	80	M12 x 35	12	145	29300	450	150	140	5,500	342,00
CE04-140*	140	190	76	90	M14 x 40	10	210	32200	460	130	125	6,700	345,00
CE04-150*	150	200	76	90	M14 x 40	12	210	41400	550	145	140	7,000	348,00
CE04-160*	160	210	76	90	M14 x 40	12	210	44100	550	135	130	7,500	358,00
CE04-170*	170	225	76	90	M14 x 40	14	210	54700	640	150	150	8,700	435,00
CE04-180*	180	235	76	90	M14 x 40	14	210	57900	640	140	140	9,200	457,00



### Type CE05

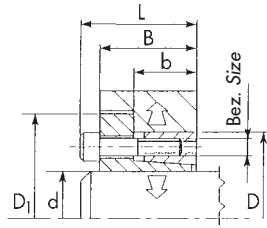
Bezeichnung Part No.	Abmessung Dimension				Schrauben Screws			Bei Anzugsmoment $M_s$ übertragbar With tightening torque $M_s$ applied		Flächen- pressung Pressure		Gewicht Weight	€/Stück each
	d	D	B	L	Bezeichnung Part No.	Anzahl No.	Anzugs- moment Tightening torque $M_s$	Drehmoment Torque	Axialkraft Axial force	Welle Shaft	Nabe Hub		
								M	F	$P_W$	$P_N$		
								(Nm)	(kN)	(N/mm <sup>2</sup> )	(N/mm <sup>2</sup> )		
(mm)	(mm)	(mm)	(mm)		Stück each	(Nm)	(Nm)	(kN)	(N/mm <sup>2</sup> )	(N/mm <sup>2</sup> )	(kg)		
CE05- 20	20	47	28	34	M 6 x 20	6	14	410	41	218	137	0,260	30,00
CE05- 22	22	47	28	34	M 6 x 20	6	14	450	41	198	137	0,250	30,00
CE05- 24*	24	50	28	34	M 6 x 20	6	14	490	41	182	128	0,276	32,90
CE05- 25	25	50	28	34	M 6 x 20	6	14	510	41	175	128	0,268	32,90
CE05- 28*	28	55	28	34	M 6 x 20	6	14	570	41	156	117	0,322	32,90
CE05- 30	30	55	28	34	M 6 x 20	6	14	610	41	145	117	0,304	34,30
CE05- 32*	32	60	28	34	M 6 x 20	8	14	880	54	182	143	0,370	38,10
CE05- 35	35	60	28	34	M 6 x 20	8	14	960	54	166	143	0,344	38,10
CE05- 38*	38	65	28	34	M 6 x 20	8	14	1040	54	153	132	0,408	40,20
CE05- 40	40	65	28	34	M 6 x 20	8	14	1090	54	145	132	0,378	40,20
CE05- 42*	42	75	33	41	M 8 x 25	8	35	2200	105	201	186	0,630	46,60
CE05- 45	45	75	33	41	M 8 x 25	8	35	2360	105	207	186	0,630	46,60
CE05- 48*	48	80	33	41	M 8 x 25	8	35	2520	105	194	174	0,680	49,60
CE05- 50	50	80	33	41	M 8 x 25	8	35	2620	105	186	174	0,686	49,60
CE05- 55*	55	85	33	41	M 8 x 25	8	35	2890	105	169	164	0,720	57,90
CE05- 60	60	90	33	41	M 8 x 25	8	35	3150	105	155	155	0,794	57,90
CE05- 65*	65	95	33	41	M 8 x 25	8	35	3410	105	143	174	0,842	72,60
CE05- 70*	70	110	40	50	M10 x 30	8	70	5990	170	180	172	1,534	112,00
CE05- 75*	75	115	40	50	M10 x 30	8	70	6420	170	168	165	1,634	122,00
CE05- 80*	80	120	40	50	M10 x 30	8	70	6850	170	158	158	1,722	122,00
CE05- 85*	95	125	40	50	M10 x 30	10	70	9090	210	186	189	1,834	137,00
CE05- 90*	90	130	40	50	M10 x 30	10	70	9630	210	175	182	1,900	141,00
CE05-100*	100	145	44	56	M12 x 30	8	115	11900	240	158	168	2,618	181,00
CE05-110*	110	155	44	56	M12 x 30	8	115	13090	240	144	157	2,788	191,00
CE05-120*	120	165	44	56	M12 x 30	9	115	16060	270	148	166	3,600	193,00
CE05-130*	130	180	52	64	M12 x 30	12	115	23200	360	152	155	4,410	264,00
CE05-140*	140	190	54	68	M14 x 40	9	185	25500	360	138	150	4,920	275,00
CE05-150*	150	200	54	68	M14 x 40	10	185	30300	400	143	158	5,200	323,00
CE05-160*	160	210	54	68	M14 x 40	12	185	38800	490	161	181	5,600	336,00
CE05-180*	180	235	64	78	M14 x 40	12	185	43700	490	119	125	8,500	420,00
CE05-200*	200	260	64	78	M14 x 40	15	185	60700	610	134	141	9,600	547,00



### Type CE06

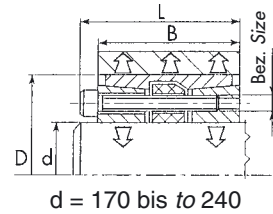
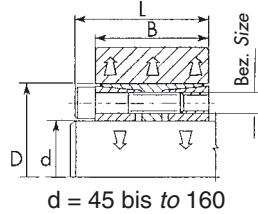
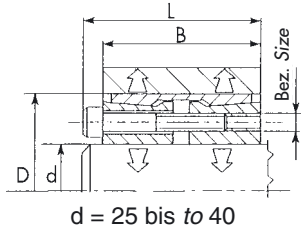
Bezeichnung Part No.	Abmessung Dimension						Schrauben Screws			Bei Anzugsmoment M <sub>s</sub> übertragbar With tightening torque M <sub>s</sub> applied		Flächen- pression Pressure		Gewicht Weight	
										Drehmoment Torque	Axialkraft Axial force	Welle Shaft	Nabe Hub		
	d	D	D <sub>1</sub>	b	B	L	Bezeichnung Part No.	Anzahl No.	Anzugs- moment Tightening torque M <sub>s</sub>	M	F	P <sub>W</sub>	P <sub>N</sub>		
	(mm)	(mm)	(mm)	(mm)	(mm)	(mm)		Stück each	(Nm)	(Nm)	(K <sub>N</sub> )	(N/ mm <sup>2</sup> )	(N/ mm <sup>2</sup> )		
CE06- 20	20	47	53	31,0	42	48	M 6 x 25	6	17	320	33	116	70	0,416	<b>38,80</b>
CE06- 22	22	47	53	31,0	42	48	M 6 x 25	6	17	360	33	105	70	0,398	<b>38,80</b>
CE06- 24	24	50	56	31,0	42	48	M 6 x 25	6	17	390	33	97	70	0,442	<b>42,50</b>
CE06- 25	25	50	56	31,0	42	48	M 6 x 25	6	17	400	33	93	70	0,434	<b>42,50</b>
CE06- 28	28	55	61	31,0	42	48	M 6 x 25	6	17	450	33	83	60	0,516	<b>42,50</b>
CE06- 30	30	55	61	31,0	42	48	M 6 x 25	6	17	490	33	77	60	0,492	<b>42,50</b>
CE06- 32	32	60	66	31,0	42	48	M 6 x 25	8	17	690	43	97	70	0,560	<b>46,10</b>
CE06- 35	35	60	66	31,0	42	48	M 6 x 25	8	17	750	43	88	70	0,548	<b>46,10</b>
CE06- 38	38	65	71	31,0	42	48	M 6 x 25	8	17	820	43	81	70	0,650	<b>47,40</b>
CE06- 40	40	65	71	31,0	42	48	M 6 x 25	8	17	860	43	77	70	0,608	<b>47,40</b>
CE06- 42	42	75	81	36,0	50	58	M 8 x 30	6	41	1250	60	82	70	1,090	<b>57,20</b>
CE06- 45	45	75	81	36,0	50	58	M 8 x 30	6	41	1340	60	77	70	1,004	<b>57,20</b>
CE06- 48	48	80	86	36,0	50	58	M 8 x 30	8	41	1910	80	96	90	1,100	<b>59,40</b>
CE06- 50	50	80	86	36,0	50	58	M 8 x 30	8	41	1990	80	92	90	1,074	<b>59,40</b>
CE06- 55	55	85	91	36,0	50	58	M 8 x 30	8	41	2200	80	84	90	1,204	<b>66,70</b>
CE06- 60	60	90	96	36,0	50	58	M 8 x 30	8	41	2400	80	77	80	1,292	<b>73,70</b>
CE06- 65	65	95	101	36,0	50	58	M 8 x 30	8	41	2600	80	71	70	1,308	<b>121,00</b>
CE06- 70	70	110	119	46,0	60	70	M10 x 30	8	83	4600	130	92	80	2,440	<b>130,00</b>
CE06- 75*	75	115	124	46,0	60	70	M10 x 30	8	83	4930	130	86	80	2,596	<b>135,00</b>
CE06- 80	80	120	129	46,0	60	70	M10 x 30	8	83	5200	130	81	70	2,730	<b>137,00</b>
CE06- 85*	85	125	134	46,0	60	70	M10 x 30	10	83	7000	165	95	90	2,800	<b>150,00</b>
CE06- 90	90	130	139	46,0	60	70	M10 x 30	10	83	7400	165	90	80	2,986	<b>156,00</b>
CE06-100	100	145	155	52,0	68	80	M12 x 35	8	145	9700	190	84	80	4,136	<b>202,00</b>
CE06-110*	110	155	165	52,0	68	80	M12 x 35	8	145	10680	190	77	70	4,500	<b>296,00</b>
CE06-120*	120	165	175	52,0	68	80	M12 x 35	10	145	14500	240	88	90	4,800	<b>335,00</b>
CE06-130*	130	180	188	52,0	68	80	M12 x 35	12	145	18900	290	97	100	5,800	<b>376,00</b>
CE06-140*	140	190	199	58,5	76	90	M14 x 40	10	230	22800	325	91	90	7,000	<b>378,00</b>
CE06-150*	150	200	209	58,5	76	90	M14 x 40	12	230	29300	390	102	100	7,300	<b>387,00</b>
CE06-160*	160	210	219	58,5	76	90	M14 x 40	12	230	31300	390	95	100	7,800	<b>407,00</b>
CE06-170*	170	225	234	58,5	76	90	M14 x 40	14	230	38800	460	105	110	9,600	<b>485,00</b>
CE06-180*	180	235	244	58,5	76	90	M14 x 40	14	230	41000	460	99	100	9,000	<b>491,00</b>





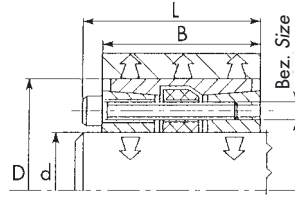
**Type CE07**

Bezeichnung Part No.	Abmessung Dimension						Schrauben Screws			Bei Anzugsmoment $M_s$ übertragbar With tightening torque $M_s$ applied		Flächen- pression Pressure		Gewicht Weight	€/Stück each
										Drehmoment Torque	Axialkraft Axial force	Welle Shaft	Nabe Hub		
	d	D	D <sub>1</sub>	b	B	L	Bezeichnung Part No.	Anzahl No.	Anzugs- moment Tightening torque $M_s$	M	F	P <sub>w</sub>	P <sub>N</sub>		
	(mm)	(mm)	(mm)	(mm)	(mm)	(mm)		Stück each	(Nm)	(Nm)	(KN)	(N/ mm <sup>2</sup> )	(N/ mm <sup>2</sup> )		
CE07- 20	20	47	56	22	28	34	M 6 x 20	6	17	320	32	171	100	0,280	30,00
CE07- 22	22	47	56	22	28	34	M 6 x 20	6	17	350	32	156	100	0,270	30,00
CE07- 24	24	50	59	22	28	34	M 6 x 20	6	17	390	32	143	100	0,310	32,90
CE07- 25	25	50	59	22	28	34	M 6 x 20	6	17	400	32	137	100	0,304	32,90
CE07- 28	28	55	64	22	28	34	M 6 x 20	6	17	450	32	122	90	0,362	32,90
CE07- 30	30	55	64	22	28	34	M 6 x 20	6	17	490	32	114	90	0,346	34,30
CE07- 32	32	60	69	22	28	34	M 6 x 20	8	17	700	43	143	110	0,420	38,10
CE07- 35	35	60	69	22	28	34	M 6 x 20	8	17	760	43	131	110	0,390	38,10
CE07- 38	38	65	74	22	28	34	M 6 x 20	8	17	820	43	120	100	0,454	40,20
CE07- 40	40	65	74	22	28	34	M 6 x 20	8	17	870	43	114	100	0,446	40,20
CE07- 42	42	75	84	25	33	41	M 8 x 25	6	41	1700	80	168	140	0,440	46,60
CE07- 45	45	75	84	25	33	41	M 8 x 25	6	41	1800	80	157	140	0,696	46,60
CE07- 48	48	80	89	25	33	41	M 8 x 25	8	41	1900	80	147	130	0,800	49,60
CE07- 50	50	80	89	25	33	41	M 8 x 25	8	41	2000	80	141	130	0,756	49,60
CE07- 55	55	85	91	25	33	41	M 8 x 25	8	41	2200	80	128	120	0,850	57,90
CE07- 60	60	90	99	25	33	41	M 8 x 25	8	41	2400	80	117	120	0,900	57,90
CE07- 65	65	95	104	25	33	41	M 8 x 25	8	41	2600	80	108	110	0,934	72,60
CE07- 70	70	110	119	30	40	50	M10 x 30	8	83	4600	130	138	130	1,670	112,00
CE07- 75	75	115	124	30	40	50	M10 x 30	8	83	5000	130	129	130	1,760	122,00
CE07- 80	80	120	129	30	40	50	M10 x 30	8	83	5300	130	121	120	1,868	122,00
CE07- 85	85	125	134	30	40	50	M10 x 30	10	83	7000	160	142	150	1,966	137,00
CE07- 90	90	130	139	30	40	50	M10 x 30	10	83	7400	160	135	140	2,046	141,00
CE07-100	100	145	154	32	44	56	M12 x 30	8	145	9700	200	129	140	2,830	181,00
CE07-110	110	155	164	32	44	56	M12 x 30	8	145	10700	200	117	130	3,100	191,00
CE07-120	120	165	174	32	44	56	M12 x 30	9	145	13100	220	121	140	3,284	193,00
CE07-130	130	180	189	40	52	64	M12 x 30	12	145	19000	290	124	130	4,600	264,00
CE07-140*	140	190	199	40	54	68	M14 x 40	9	230	20500	300	111	120	4,980	275,00
CE07-150*	150	200	209	40	54	68	M14 x 40	10	230	24500	330	115	130	5,200	323,00
CE07-160*	160	210	219	40	54	68	M14 x 40	12	230	31300	390	130	150	5,600	336,00
CE07-180*	180	235	244	50	64	78	M14 x 40	12	230	35000	390	96	100	8,500	420,00
CE07-200*	200	260	269	50	64	78	M14 x 40	15	230	49000	500	108	110	9,600	547,00



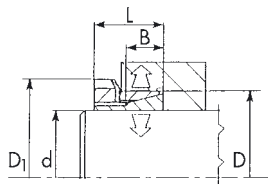
### Type CE08

Bezeichnung Part No.	Abmessung Dimension				Schrauben Screws			Bei Anzugsmoment M <sub>s</sub> übertragbar With tightening torque M <sub>s</sub> applied		Flächen- pressung Pressure		Gewicht Weight	€/Stück each
	d	D	B	L	Bezeichnung Part No.	Anzahl No.	Anzugs- moment Tightening torque M <sub>s</sub>	Drehmoment Torque	Axialkraft Axial force	Welle Shaft	Nabe Hub		
CE08- 25*	25	50	45	51	M 6 x 35	6	17	700	55	157	80	0,415	79,70
CE08- 30*	30	55	45	51	M 6 x 35	8	17	1200	70	175	90	0,464	82,90
CE08- 35*	35	60	45	51	M 6 x 35	8	17	1400	70	150	90	0,526	92,00
CE08- 40*	40	65	45	51	M 6 x 35	10	17	2000	90	164	100	0,550	111,00
CE08- 45	45	75	45	53	M 8 x 35	8	41	3200	140	216	130	0,768	129,00
CE08- 50	50	80	64	72	M 8 x 55	8	41	3600	140	165	80	1,326	147,00
CE08- 55*	55	85	64	72	M 8 x 55	8	41	4000	140	150	80	1,430	162,00
CE08- 60	60	90	64	72	M 8 x 55	10	41	5400	170	171	90	1,524	165,00
CE08- 65*	65	95	64	72	M 8 x 55	10	41	5800	170	158	90	2,000	203,00
CE08- 70	70	110	78	88	M10 x 60	10	83	10300	280	199	100	2,932	238,00
CE08- 75*	75	115	78	88	M10 x 60	10	83	11000	280	186	100	3,100	265,00
CE08- 80	80	120	78	88	M10 x 60	12	83	14000	340	209	110	3,300	274,00
CE08- 85*	85	125	78	88	M10 x 60	12	83	15000	340	197	110	3,400	291,00
CE08- 90	90	130	78	88	M10 x 60	12	83	16000	340	186	100	3,600	295,00
CE08- 95*	95	135	78	88	M10 x 60	12	83	17000	340	176	100	4,000	361,00
CE08-100	100	145	100	112	M12 x 80	12	145	26000	500	198	100	6,000	384,00
CE08-110*	110	155	100	112	M12 x 80	12	145	29000	500	180	100	6,000	433,00
CE08-120*	120	165	100	112	M12 x 80	14	145	36400	600	192	110	6,000	466,00
CE08-130*	130	180	116	130	M14 x 90	12	230	45400	700	174	100	10,100	643,00
CE08-140*	140	190	116	130	M14 x 90	14	230	57000	800	189	110	10,500	790,00
CE08-150*	150	200	116	130	M14 x 90	16	230	70000	900	201	120	11,000	840,00
CE08-160*	160	210	116	130	M14 x 90	16	230	75000	900	189	110	12,000	888,00
CE08-170*	170	225	146	162	M16 x 110	14	355	95000	1100	168	100	17,000	1.020,00
CE08-180*	180	235	146	162	M16 x 110	15	355	115000	1200	182	110	18,400	1.085,00
CE08-190*	190	250	146	162	M16 x 110	16	355	121500	1200	172	100	21,400	1.266,00
CE08-200*	200	260	146	162	M16 x 110	16	355	128000	1200	163	100	21,800	1.349,00



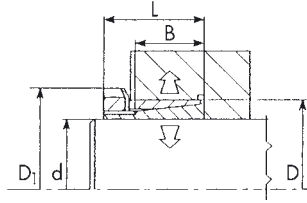
### Type CE09

Bezeichnung Part No.	Abmessung Dimension				Schrauben Screws			Bei Anzugsmoment $M_s$ übertragbar With tightening torque $M_s$ applied		Flächen- pression Pressure		Gewicht Weight	
								Drehmoment Torque	Axialkraft Axial force	Welle Shaft	Nabe Hub		
	d	D	B	L	Bezeichnung Part No.	Anzahl No.	Anzugs- moment Tightening torque $M_s$	M	F	$P_W$	$P_N$		
	(mm)	(mm)	(mm)	(mm)		Stück each	(Nm)	(Nm)	( $K_N$ )	(N/ mm <sup>2</sup> )	(N/ mm <sup>2</sup> )		
CE09- 45*	45	75	64	72	M 8 x 55	8	41	3200	120	210	125	1,000	<b>193,00</b>
CE09- 50*	50	80	78	86	M 8 x 65	8	41	3550	120	140	65	1,500	<b>210,00</b>
CE09- 60	60	90	78	86	M 8 x 65	10	41	5330	150	146	75	2,000	<b>237,00</b>
CE09- 70	70	110	102	112	M10 x 90	10	83	10260	250	147	75	4,000	<b>357,00</b>
CE09- 80*	80	120	102	112	M10 x 90	12	83	14000	300	154	85	5,000	<b>402,00</b>
CE09- 90*	90	130	102	112	M10 x 90	12	83	15800	300	137	75	6,000	<b>418,00</b>
CE09-100*	100	145	122	134	M12 x 110	12	145	26000	450	149	85	7,000	<b>542,00</b>



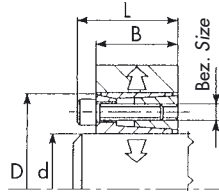
### Type CE10

Bezeichnung Part No.	Abmessung Dimension					Schrauben Screws			Bei Anzugsmoment $M_s$ übertragbar With tightening torque $M_s$ applied		Flächen- pression Pressure		Gewicht Weight	€/Stück each
	d	D	$D_1$	B	L	Bezeichnung Part No.	Anzahl No.	Anzugs- moment Tightening torque $M_s$	Drehmoment Torque	Axialkraft Axial force	Welle Shaft	Nabe Hub		
									M	F	$P_w$	$P_N$		
									(Nm)	( $K_N$ )	( $N/mm^2$ )	( $N/mm^2$ )		
(mm)	(mm)	(mm)	(mm)	(mm)	Stück each	(Nm)	( $K_N$ )	( $N/mm^2$ )	( $N/mm^2$ )	(kg)				
CE10-14	14	25	32	6,5	16,5	M20 x 1,5	1	65	37	6	171	73	0,052	16,80
CE10-15	15	25	32	6,5	16,5	M20 x 1,5	1	65	40	6	159	73	0,050	16,80
CE10-16	16	25	32	6,5	16,5	M20 x 1,5	1	65	42	6	149	73	0,048	18,60
CE10-18	18	30	38	7,0	17,0	M25 x 1,5	1	85	65	8	168	80	0,080	18,60
CE10-19	19	30	38	7,0	17,0	M25 x 1,5	1	95	60	7	136	70	0,078	20,20
CE10-20	20	30	38	7,0	17,0	M25 x 1,5	1	110	70	8	149	80	0,074	20,20
CE10-24	24	35	45	7,0	17,0	M30 x 1,5	1	155	100	10	147	80	0,100	21,20
CE10-25	25	35	45	7,0	17,0	M30 x 1,5	1	160	110	10	146	90	0,092	21,20
CE10-28	28	40	52	8,0	20,0	M35 x 1,5	1	200	140	11	126	70	0,140	23,10
CE10-30	30	40	52	8,0	20,0	M35 x 1,5	1	240	170	14	138	80	0,130	25,30
CE10-32	32	45	58	9,0	22,0	M40 x 1,5	1	320	210	15	135	80	0,170	25,60
CE10-35	35	45	58	9,0	22,0	M40 x 1,5	1	320	230	15	123	80	0,168	25,60
CE10-40	40	50	64	9,0	23,0	M45 x 1,5	1	440	330	19	132	90	0,216	25,60
CE10-45	45	55	70	10,0	25,5	M50 x 1,5	1	550	440	23	127	90	0,266	27,40
CE10-50*	50	60	75	10,0	25,5	M55 x 1,5	1	660	530	25	125	90	0,278	34,10
CE10-60*	60	70	85	12,0	29,5	M65 x 1,5	1	900	830	32	112	80	0,390	34,10



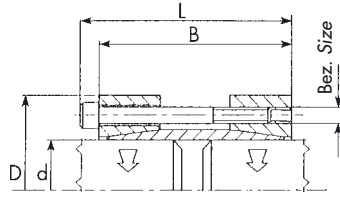
### Type CE11

Bezeichnung Part No.	Abmessung Dimension					Schrauben Screws			Bei Anzugsmoment $M_s$ übertragbar With tightening torque $M_s$ applied		Flächen- pression Pressure		Gewicht Weight	
									Drehmoment Torque	Axialkraft Axial force	Welle Shaft	Nabe Hub		
	d	D	D <sub>1</sub>	B	L	Bezeichnung Part No.	Anzahl No.	Anzugs- moment Tightening torque $M_s$	M	F	P <sub>W</sub>	P <sub>N</sub>		
	(mm)	(mm)	(mm)	(mm)	(mm)		Stück each	(Nm)	(Nm)	(kN)	(N/ mm <sup>2</sup> )	(N/ mm <sup>2</sup> )		
CE11-14	14	25	32	17	29	M20 x 1,5	1	90	90	15	145	80	0,080	25,50
CE11-15	15	25	32	17	29	M20 x 1,5	1	90	100	15	136	80	0,074	25,50
CE11-16	16	25	32	17	29	M20 x 1,5	1	70	80	12	99	60	0,072	25,50
CE11-18	18	30	38	18	31	M25 x 1,5	1	190	200	25	179	110	0,120	26,90
CE11-19	19	30	38	18	31	M25 x 1,5	1	150	170	20	134	90	0,114	26,90
CE11-20	20	30	38	18	31	M25 x 1,5	1	110	130	15	93	60	0,104	26,90
CE11-24	24	35	45	22	35	M30 x 1,5	1	230	270	26	112	80	0,162	29,20
CE11-25	25	35	45	22	35	M30 x 1,5	1	170	200	19	80	60	0,150	29,20
CE11-28	28	40	52	22	35	M35 x 1,5	1	390	460	38	141	110	0,214	29,20
CE11-30	30	40	52	22	35	M35 x 1,5	1	240	300	24	63	70	0,192	29,20
CE11-32	32	45	58	27	42	M40 x 1,5	1	320	420	31	80	70	0,280	34,10
CE11-35	35	45	58	28	42	M40 x 1,5	1	320	460	31	70	60	0,270	34,10
CE11-40	40	50	64	28	44	M45 x 1,5	1	440	640	37	75	70	0,330	34,10
CE11-45	45	55	70	28	45	M50 x 1,5	1	550	760	40	71	60	0,386	42,00
CE11-50	50	60	75	28	46	M50 x 1,5	1	660	930	44	70	60	0,408	46,40
CE11-60	60	70	85	28	52	M65 x 1,5	1	1050	1500	59	79	70	0,550	55,60



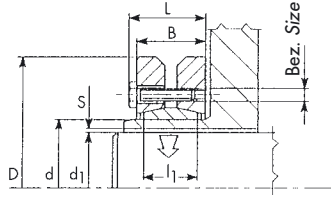
### Type CE12

Bezeichnung Part No.	Abmessung Dimension				Schrauben Screws			Bei Anzugsmoment $M_s$ übertragbar With tightening torque $M_s$ applied		Flächen- pressung Pressure		Gewicht Weight	€/Stück each
	d	D	B	L	Bezeichnung Part No.	Anzahl No.	Anzugs- moment Tightening torque $M_s$	Drehmoment	Axialkraft	Welle	Nabe		
								Torque	Axial force	Shaft	Hub		
								M	F	$P_w$	$P_N$		
(mm)	(mm)	(mm)	(mm)		Stück each	(Nm)	(Nm)	(K <sub>N</sub> )	(N/ mm <sup>2</sup> )	(N/ mm <sup>2</sup> )	(kg)		
CE12-16*	16	32	17,0	21,0	M4 x 14	4	5	80	13	134	68	0,070	37,70
CE12-18*	18	40	18,0	24,0	M6 x 15	4	17	180	24	119	100	0,122	43,20
CE12-19*	19	41	18,0	24,0	M6 x 15	4	17	190	24	215	100	0,126	43,20
CE12-20*	20	42	18,0	24,0	M6 x 15	4	17	200	24	204	100	0,130	43,20
CE12-22*	22	44	18,0	24,0	M6 x 15	4	17	220	24	186	90	0,138	43,20
CE12-24*	24	46	18,0	24,0	M6 x 15	6	17	360	36	170	130	0,150	46,40
CE12-25*	25	47	18,0	24,0	M6 x 15	6	17	380	36	245	130	0,160	46,40
CE12-28*	28	50	18,0	24,0	M6 x 15	6	17	420	36	219	120	0,165	48,60
CE12-30*	30	52	18,0	24,0	M6 x 15	6	17	450	36	204	120	0,174	48,60
CE12-32*	32	54	18,0	24,0	M6 x 15	6	17	480	36	191	110	0,184	53,90
CE12-35*	35	57	21,5	27,5	M6 x 15	6	17	520	36	139	90	0,242	53,90
CE12-40*	40	62	21,5	27,5	M6 x 15	8	17	600	36	122	80	0,272	57,70
CE12-45*	45	73	28,0	36,0	M8 x 22	8	41	1700	90	84	130	0,514	68,60
CE12-50*	50	78	28,0	36,0	M8 x 22	8	41	1840	90	187	120	0,570	68,60
CE12-60*	60	88	28,0	36,0	M8 x 22	8	41	2200	90	156	100	0,644	113,00



### Type CE13

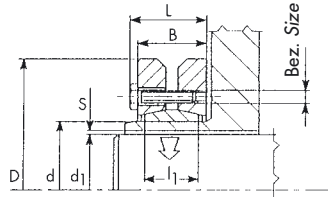
Bezeichnung Part No.	Abmessung Dimension				Schrauben Screws			Bei Anzugsmoment $M_s$ übertragbar With tightening torque $M_s$ applied		Flächen- pressung Pressure		Gewicht Weight	
								Drehmoment Torque	Axialkraft Axial force	Welle Shaft	Nabe Hub		
	d	D	B	L	Bezeichnung Part No.	Anzahl No.	Anzugs- moment Tightening torque $M_s$	M	F	$P_W$	$P_N$		
	(mm)	(mm)	(mm)	(mm)		Stück each	(Nm)	(Nm)	(K <sub>N</sub> )	(N/ mm <sup>2</sup> )	(N/ mm <sup>2</sup> )		
CE13-15*	15	45	50	56	M 6 x 45	4	17	150	18	81		0,378	47,60
CE13-16*	16	45	50	56	M 6 x 45	4	17	160	18	76		0,370	47,60
CE13-18*	18	50	50	56	M 6 x 45	4	17	180	18	68		0,450	47,60
CE13-19*	19	50	50	56	M 6 x 45	4	17	190	18	64		0,444	47,60
CE13-20*	20	50	50	56	M 6 x 45	4	17	200	18	61		0,436	47,60
CE13-24*	24	55	60	66	M 6 x 55	6	17	360	27	63		0,632	49,10
CE13-25*	25	55	60	66	M 6 x 55	6	17	380	27	60		0,616	56,50
CE13-28*	28	60	60	66	M 6 x 55	6	17	370	24	46		0,752	60,00
CE13-30*	30	60	60	66	M 6 x 55	6	17	400	24	43		0,712	60,00
CE13-35*	35	75	75	83	M 8 x 70	4	41	640	32	41		1,328	79,10
CE13-40*	40	75	75	83	M 8 x 70	4	41	730	32	36		1,188	83,60
CE13-45*	45	85	85	93	M 8 x 80	6	41	1200	48	41		1,716	87,90
CE13-50*	50	90	85	93	M 8 x 80	6	41	1340	48	37		1,884	90,70
CE13-60*	60	100	85	93	M 8 x 80	8	41	2200	64	41		2,174	127,00
CE13-70*	70	115	100	110	M10 x 80	6	83	3200	80	38		4,000	199,00



### Type CE14

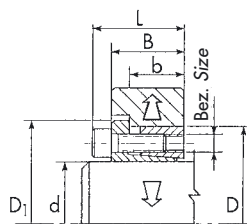
Bezeichnung Part No.	Abmessung Dimension							Schrauben Screws			Bei Anzugsmoment M <sub>s</sub> übertragbar With tightening torque M <sub>s</sub> applied		Flächen- pression Pressure		Gewicht Weight	€/Stück each
	d	d <sub>1</sub>	D	B	L	l <sub>1</sub>	S	Bez. Size	Anzahl No.	Anzugs- moment Tightening torque M <sub>s</sub>	Drehmoment Torque	Axialkraft Axial force	Welle Shaft	Nabe Hub		
											M	F	P <sub>w</sub>	P <sub>N</sub>		
											(Nm)	(K <sub>N</sub> )	(N/ mm <sup>2</sup> )	(N/ mm <sup>2</sup> )		
(mm)	(mm)	(mm)	(mm)	(mm)	(mm)	(mm)	Stück each	(Nm)	(Nm)	(K <sub>N</sub> )	(N/ mm <sup>2</sup> )	(N/ mm <sup>2</sup> )	(kg)			
CE14- 24*	24	19	50	19	23,0	14	0,017	M5	6	4	180	26	140	280	0,184	77,80
		20									27	170	280			
		21									29	200	280			
CE14- 30*	30	24	60	21	25,0	16	0,017	M5	6	4	310	26	200	300	0,288	79,90
		25									27	205	300			
		26									28	220	300			
CE14- 36*	36	28	72	23	27,0	18	0,017	M6	6	12	460	50	235	360	0,468	86,40
		30									54	240	360			
		31									58	260	360			
CE14- 44*	44	32	80	25	29,0	20	0,032	M6	8	12	630	65	225	350	0,590	93,00
		35									74	240	350			
		36									77	255	350			
CE14- 50*	50	38	90	27	31,0	22	0,032	M6	8	12	940	79	180	285	0,794	99,10
		40									85	200	285			
		42									90	220	285			
CE14- 55*	55	42	100	30	34,0	23	0,032	M6	8	12	1200	80	155	250	1,104	108,00
		45									90	180	250			
		48									100	200	250			
CE14- 62*	62	48	110	30	34,0	23	0,032	M6	10	12	1800	100	190	270	1,312	116,00
		50									110	195	270			
		52									120	210	270			
CE14- 68*	68	50	115	30	34,0	23	0,038	M6	10	12	2000	100	140	250	1,304	122,00
		55									110	175	250			
		60									120	210	250			
CE14- 75*	75	55	138	33	38,0	25	0,048	M8	8	30	2500	120	190	300	1,700	126,00
		60									140	220	300			
		65									150	250	300			
CE14- 80*	80	60	145	32	38,0	25	0,048	M8	8	30	3200	120	185	280	2,540	144,00
		65									140	210	280			
		70									160	240	280			
CE14- 90*	90	65	155	39	45,0	30	0,048	M8	10	30	4700	170	180	260	3,300	218,00
		70									190	200	260			
		75									210	220	260			
CE14-100*	100	70	170	44	49,5	34	0,048	M8	12	30	6900	180	165	250	4,410	251,00
		75									220	185	250			
		80									240	190	250			
CE14-110*	110	75	185	50	57,0	39	0,048	M10	10	59	7200	230	160	260	5,900	381,00
		80									250	170	260			
		85									260	185	260			
CE14-115*	115	80	188	50	57,0	39	0,048	M10	10	59	8500	210	150	245	9,000	387,00
		85									240	170	245			
		90									270	180	245			
CE14-125*	125	85	215	54	61,0	42	0,056	M10	12	59	11000	300	160	260	8,600	391,00
		90									320	180	260			
		95									350	190	260			
CE14-130*	130	90	215	52	59,0	42	0,056	M10	12	59	13700	300	160	250	8,700	481,00
		95									330	180	250			
		100									360	190	250			





**Type CE14**

Bezeichnung Part No.	Abmessung Dimension							Schrauben Screws			Bei Anzugsmoment M <sub>s</sub> übertragbar With tightening torque M <sub>s</sub> applied		Flächen- pression Pressure		Gewicht Weight	
	d	d <sub>1</sub>	D	B	L	l <sub>1</sub>	S	Bez. Size	Anzahl No.	Anzugs- moment Tightening torque M <sub>s</sub>	Drehmoment Torque	Axialkraft Axial force	Welle Shaft	Nabe Hub		
											M	F	P <sub>w</sub>	P <sub>N</sub>		
											(Nm)	(kN)	(N/ mm <sup>2</sup> )	(N/ mm <sup>2</sup> )		
(mm)	(mm)	(mm)	(mm)	(mm)	(mm)	(mm)		Stück each	(Nm)	(Nm)	(kN)	(N/ mm <sup>2</sup> )	(N/ mm <sup>2</sup> )	(kg)	€/Stück each	
CE14-140*	140	95	230	60	68,0	46	0,056	M12	10	100	15000	360	170	260	10,000	618,00
		100									400	185	260			
		20000									420	195	260			
CE14-155*	155	105	263	62	70,0	50	0,069	M12	12	100	20000	390	180	255	11,500	788,00
		110									420	190	255			
		26000									450	200	255			
CE14-165*	165	115	290	68	78,0	56	0,069	M16	8	250	36000	630	195	265	20,600	889,00
		120									660	200	265			
		44000									700	210	265			
CE14-175*	175	125	300	68	78,0	56	0,079	M16	8	250	40000	650	185	250	21,400	918,00
		130									680	190	250			
		49000									720	200	250			
CE14-185*	185	135	330	86	96,0	71	0,079	M16	10	250	55000	815	175	230	33,400	1.076,00
		140									60000	875	185	230		
		145									65000	896	190	230		
CE14-195*	195	140	350	86	96,0	71	0,079	M16	12	250	66000	950	210	265	38,000	1.667,00
		150									76000	1000	220	265		
		155									82000	1100	230	265		
CE14-220*	220	160	370	104	114,0	88	0,079	M16	15	250	95000	1200	190	235	54,000	2.011,00
		165									102000	1300	195	235		
		170									110000	1300	200	235		
CE14-240*	240	170	405	109	122,0	92	0,079	M20	12	490	120000	1500	210	260	67,000	2.632,00
		180									140000	1600	220	260		
		190									160000	1700	225	260		
CE14-260*	260	190	430	120	133,0	103	0,090	M20	14	490	165000	1700	205	250	82,000	3.097,00
		200									185000	1900	220	250		
		210									205000	2000	225	250		



### Type CE16

Bezeichnung Part No.	Abmessung Dimension						Schrauben Screws			Bei Anzugsmoment M <sub>s</sub> übertragbar With tightening torque M <sub>s</sub> applied		Flächen- pressung Pressure		Gewicht Weight	
	d	D	D <sub>1</sub>	b	B	L	Bezeichnung Part No.	Anzahl No.	Anzugs- moment Tightening torque M <sub>s</sub>	Drehmoment Torque	Axialkraft Axial force	Welle Shaft	Nabe Hub		
										M	F	P <sub>W</sub>	P <sub>N</sub>		
										(Nm)	(K <sub>N</sub> )	(N/ mm <sup>2</sup> )	(N/ mm <sup>2</sup> )		
CE16-14x55*	14	55	62	23	31	39	M8 x 25	4	41	287	41	311	103	0,480	39,10
CE16-16x55*	16	55	62	23	31	39	M8 x 25	4	41	329	41	272	103	0,460	39,10
CE16-18x55*	18	55	62	23	31	39	M8 x 25	4	41	370	41	242	103	0,450	39,10
CE16-19x55*	19	55	62	23	31	39	M8 x 25	4	41	390	41	229	103	0,440	39,10
CE16-20x55*	20	55	62	23	31	39	M8 x 25	4	41	410	41	218	103	0,440	39,10
CE16-22x55*	22	55	62	23	31	39	M8 x 25	4	41	451	41	198	103	0,420	39,10
CE16-24x55*	24	55	62	23	31	39	M8 x 25	4	41	492	41	182	103	0,410	39,10
CE16-25x55*	25	55	62	23	31	39	M8 x 25	4	41	513	41	174	103	0,410	39,10
CE16-28x55*	28	55	62	23	31	39	M8 x 25	4	41	575	41	156	103	0,390	39,10
CE16-30x55*	30	55	62	23	31	39	M8 x 25	4	41	616	41	145	103	0,370	39,10
CE16-24x65*	24	65	72	23	31	39	M8 x 25	5	41	616	51	227	111	0,600	45,60
CE16-25x65*	25	65	72	23	31	39	M8 x 25	5	41	641	51	218	111	0,600	45,60
CE16-28x65*	28	65	72	23	31	39	M8 x 25	5	41	718	51	194	111	0,580	45,60
CE16-30x65*	30	65	72	23	31	39	M8 x 25	5	41	770	51	182	111	0,570	45,60
CE16-32x65*	32	65	72	23	31	39	M8 x 25	5	41	821	51	170	111	0,540	45,60
CE16-35x65*	35	65	72	23	31	39	M8 x 25	5	41	898	51	156	111	0,520	45,60
CE16-38x65*	38	65	72	23	31	39	M8 x 25	5	41	975	51	143	111	0,480	45,60
CE16-40x65*	40	65	72	23	31	39	M8 x 25	5	41	1026	51	136	111	0,460	45,60
CE16-30x80*	30	80	88	26	34	42	M8 x 25	7	41	1077	72	227	108	1,040	55,80
CE16-32x80*	32	80	88	26	34	42	M8 x 25	7	41	1150	72	213	108	1,000	55,80
CE16-35x80*	35	80	88	26	34	42	M8 x 25	7	41	1257	72	194	108	0,960	55,80
CE16-38x80*	38	80	88	26	34	42	M8 x 25	7	41	1364	72	179	108	0,930	55,80
CE16-40x80*	40	80	88	26	34	42	M8 x 25	7	41	1436	72	170	108	0,900	55,80
CE16-42x80*	42	80	88	26	34	42	M8 x 25	7	41	1509	72	162	108	0,900	55,80
CE16-45x80*	45	80	88	26	34	42	M8 x 25	7	41	1616	72	151	108	0,870	55,80
CE16-48x80*	48	80	88	26	34	42	M8 x 25	7	41	1723	72	142	108	0,850	55,80
CE16-50x80*	50	80	88	26	34	42	M8 x 25	7	41	1796	72	136	108	0,820	55,80